

Hyundai Capital



4000 MacArthur

NEWPORT BEACH

All Availabilities + Floorplans

All Availabilities + Floorplans

| Tower | Suite | Size | Max Contig. | Availability | Furnished | Virtual Tour | Notes |
|-------|-------|-------------|--------------|--------------|-----------|----------------------------|-----------------------------------|
| West | 100 | ±9,110 RSF | ±102,417 RSF | Now | No | Click here | High-end former headquarter space |
| West | 200 | ±17,795 RSF | ±102,417 RSF | Now | Yes | | High-end former headquarter space |
| West | 300 | ±18,878 RSF | ±102,417 RSF | Now | Yes | Click here | High-end former headquarter space |
| West | 400 | ±18,878 RSF | ±102,417 RSF | Now | Yes | Click here | High-end former headquarter space |
| West | 600 | ±18,878 RSF | ±102,417 RSF | Now | Yes | Click here | High-end former headquarter space |
| West | 800 | ±18,878 RSF | ±102,417 RSF | Now | No | Click here | High-end former headquarter space |

| Tower | Suite | Size | Max Contig. | Availability | Furnished | Virtual Tour | Notes |
|-------|-------|-------------|-------------|--------------|-----------|----------------------------|-----------------------|
| East | 101 | ±10,663 RSF | ±10,663 RSF | Now | No | Click here | Creative spec suite |
| East | 260 | ±1,914 RSF | ±4,396 RSF | Now | No | Click here | |
| East | 420 | ±3,193 RSF | ±3,193 RSF | 11/1/2026 | No | | |
| East | 450 | ±6,191 RSF | ±6,191 RSF | Now | No | | |
| East | 500 | ±9,861 RSF | ±18,878 RSF | Now | No | Click here | Former law firm space |
| East | 520 | ±3,934 RSF | ±18,878 RSF | Now | No | Click here | Creative spec suite |
| East | 550 | ±5,083 RSF | ±18,878 RSF | Now | No | Click here | Spec suite |

Big Block Availabilities



1st Floor (West tower)

Suite 100: ±9,110 RSF

Available Now



[Tour space](#)



For more information, please contact:

JOE BEVAN
+1 714 675 3777
joe.bevan@jll.com
RE lic #01749828

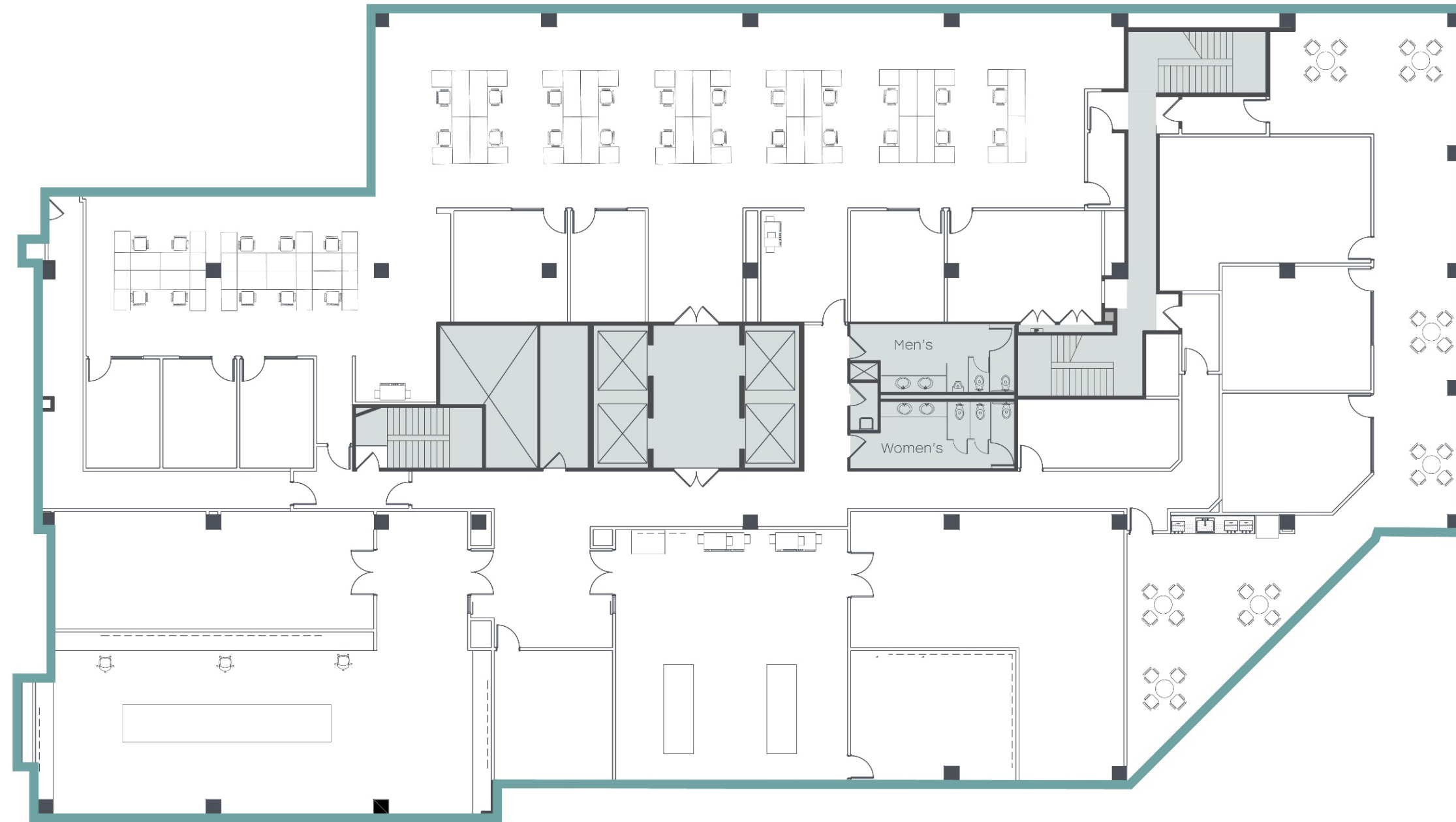
WADE CLARK
+1 949 697 4583
wade.clark@jll.com
RE lic #01192143

BILLY SHAW
+1 949 545 4034
billy.shaw@jll.com
RE lic #02089829

2nd Floor (West tower)

Suite 200: ±17,795 RSF

Available Now



For more information, please contact:

JOE BEVAN
+1 714 675 3777
joe.bevan@jll.com
RE lic #01749828

WADE CLARK
+1 949 697 4583
wade.clark@jll.com
RE lic #01192143

BILLY SHAW
+1 949 545 4034
billy.shaw@jll.com
RE lic #02089829

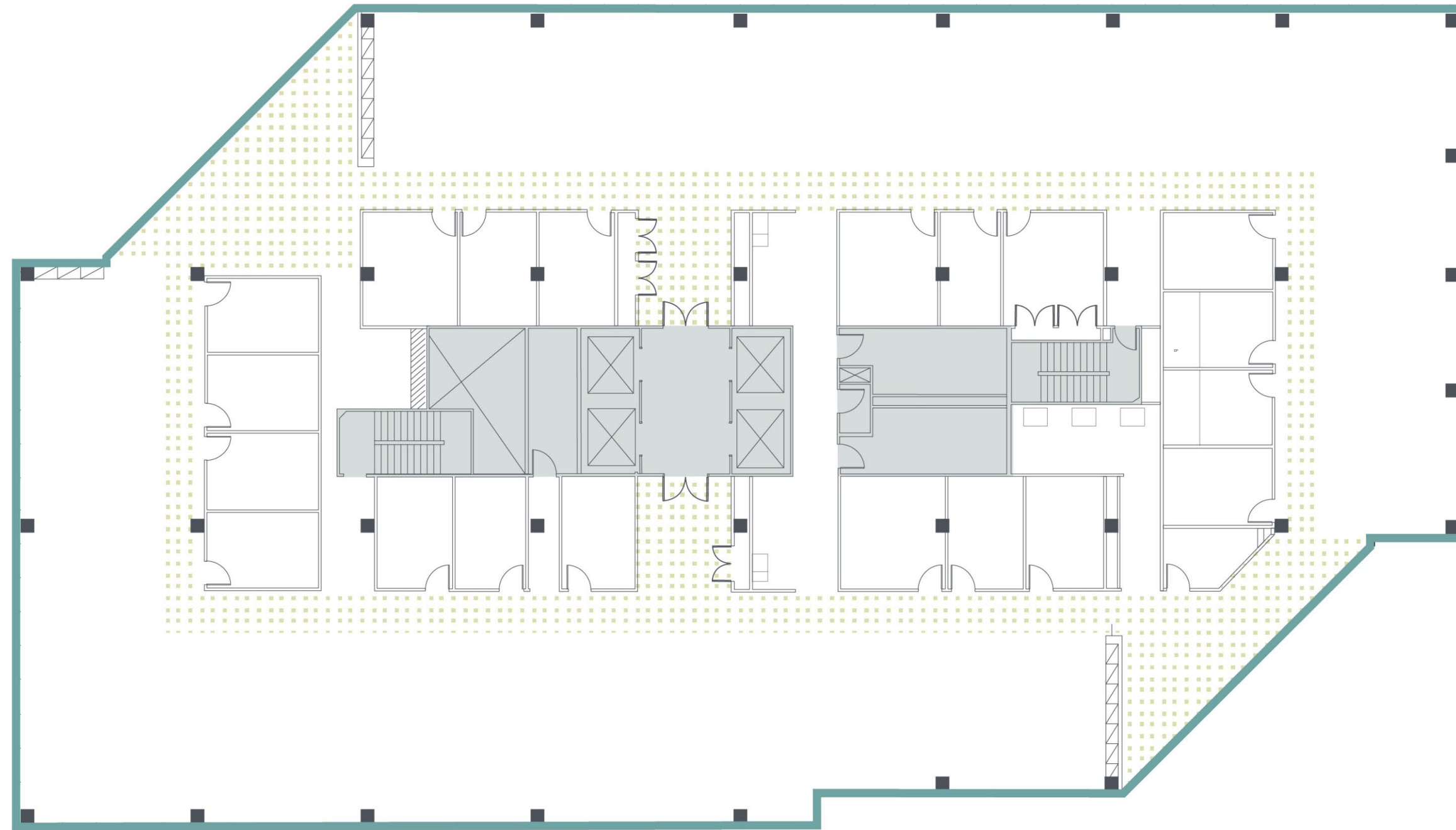
3rd - 8th Floor (West tower)

Representative Floorplan: ±18,878 RSF

Available Now



[Tour space](#)



- Polished concrete
- Exposed ceilings
- Glass
- LVT flooring

For more information, please contact:

JOE BEVAN
+1 714 675 3777
joe.bevan@jll.com
RE lic #01749828

WADE CLARK
+1 949 697 4583
wade.clark@jll.com
RE lic #01192143

BILLY SHAW
+1 949 545 4034
billy.shaw@jll.com
RE lic #02089829

6th Floor (West tower)

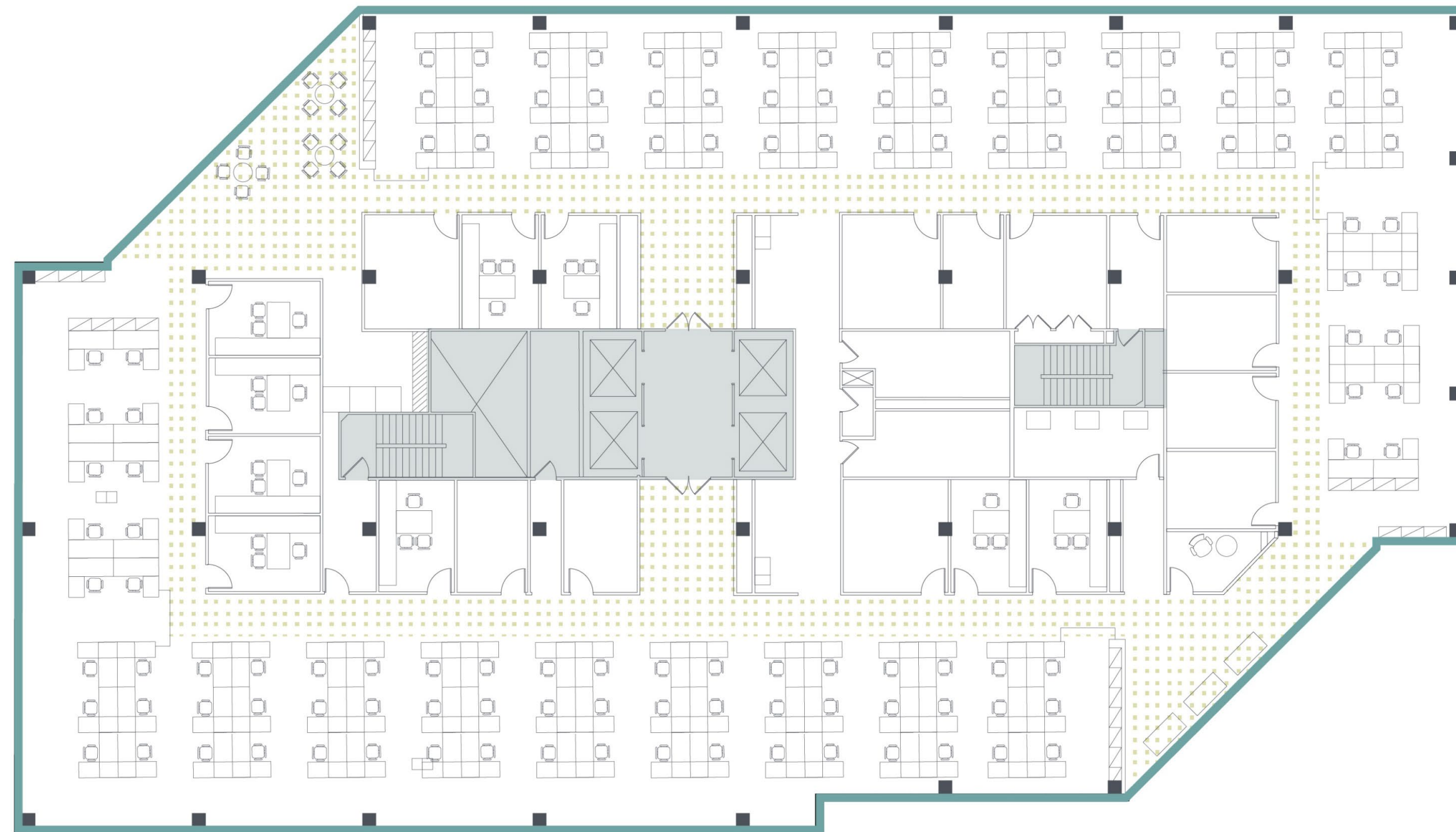
Suite 600: ±18,878 RSF

Available Now



[Tour space](#)

Furniture can be made available



- Polished concrete
- Exposed ceilings
- Glass
- LVT flooring

For more information, please contact:

JOE BEVAN
+1 714 675 3777
joe.bevan@jll.com
RE lic #01749828

WADE CLARK
+1 949 697 4583
wade.clark@jll.com
RE lic #01192143

BILLY SHAW
+1 949 545 4034
billy.shaw@jll.com
RE lic #02089829

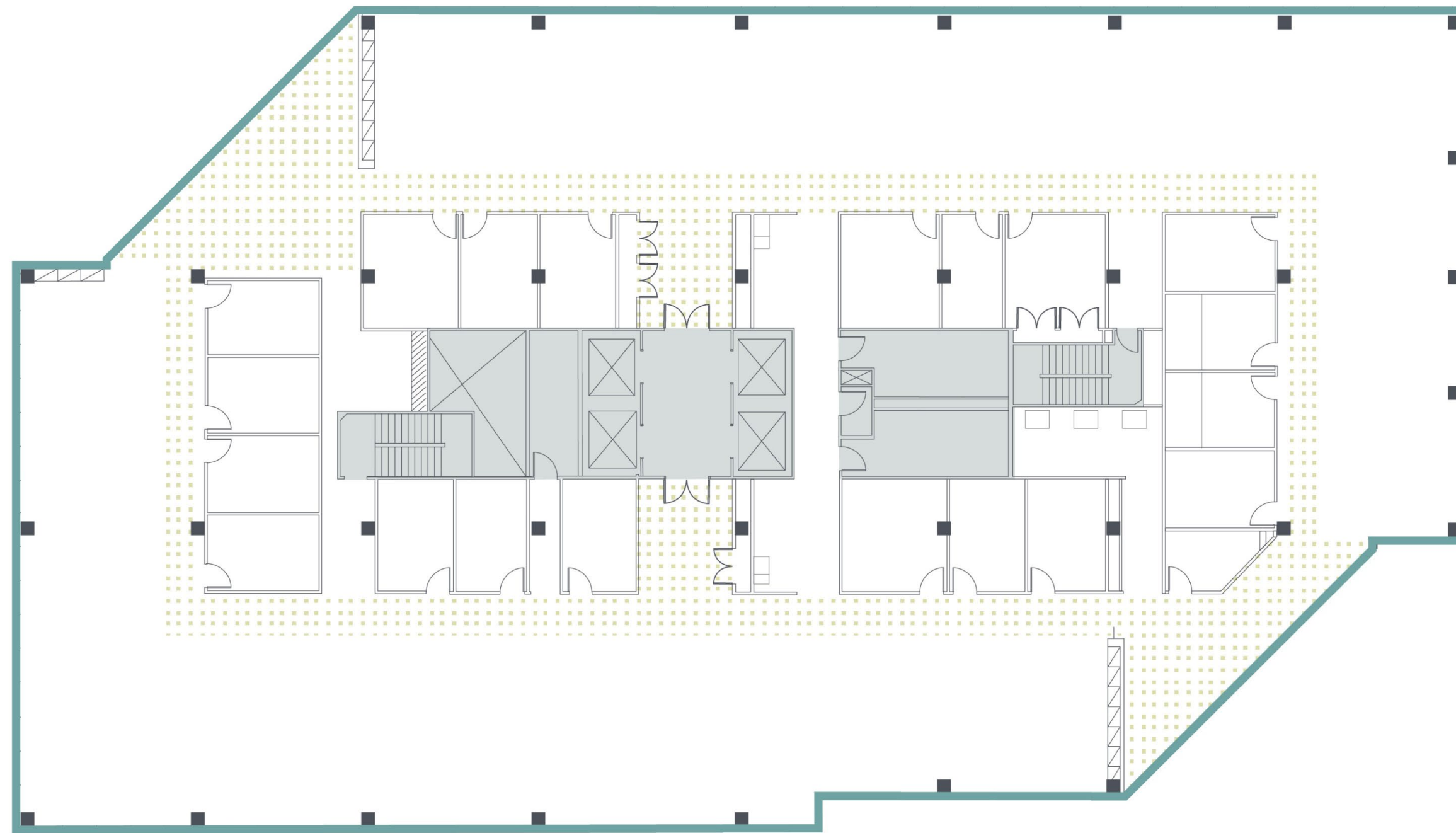
8th Floor (West tower)

Representative Floorplan: ±18,878 RSF

Available Now



[Tour space](#)



- Polished concrete
- Exposed ceilings
- Glass
- LVT flooring

For more information, please contact:

JOE BEVAN
+1 714 675 3777
joe.bevan@jll.com
RE lic #01749828

WADE CLARK
+1 949 697 4583
wade.clark@jll.com
RE lic #01192143

BILLY SHAW
+1 949 545 4034
billy.shaw@jll.com
RE lic #02089829

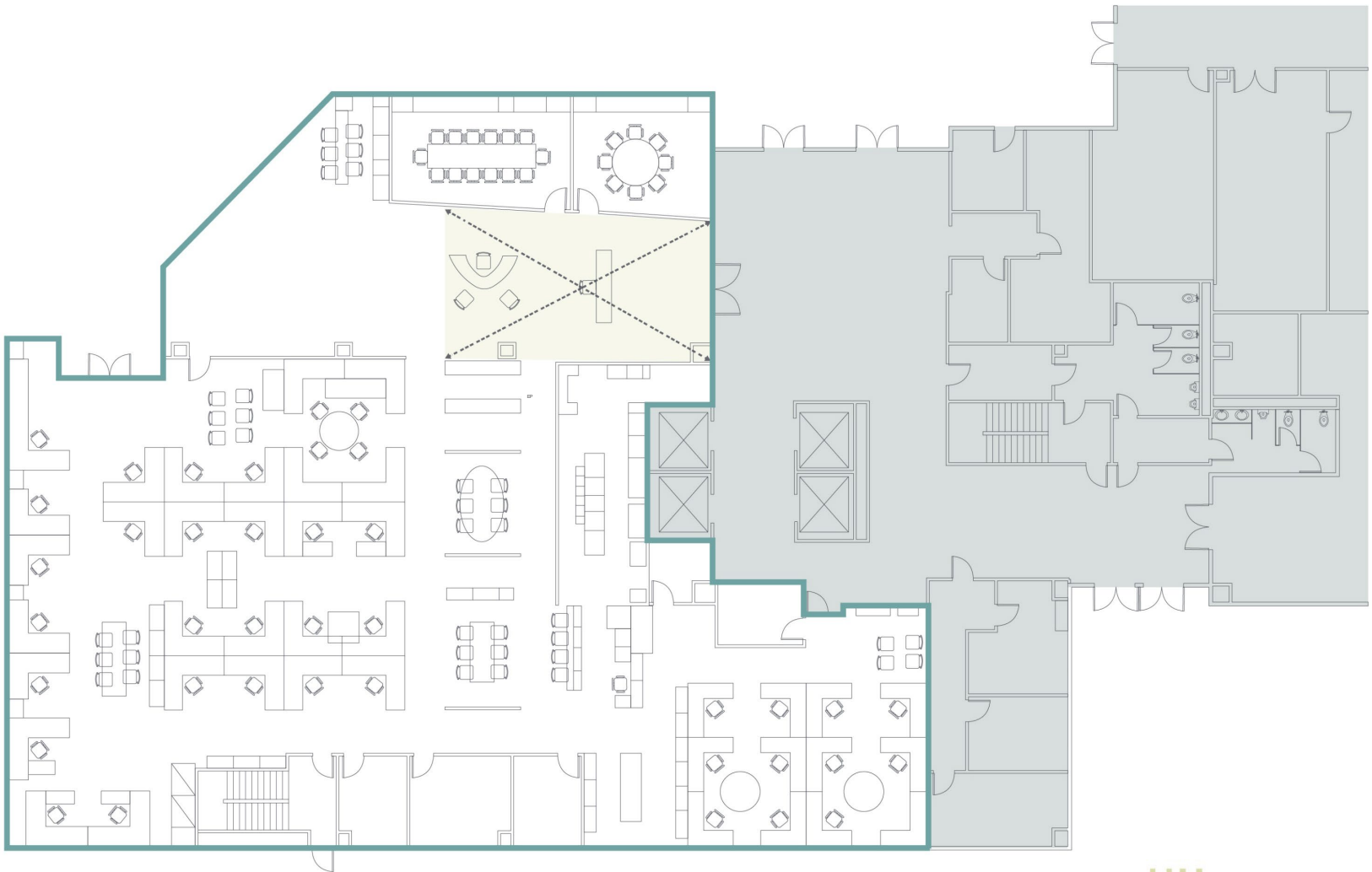
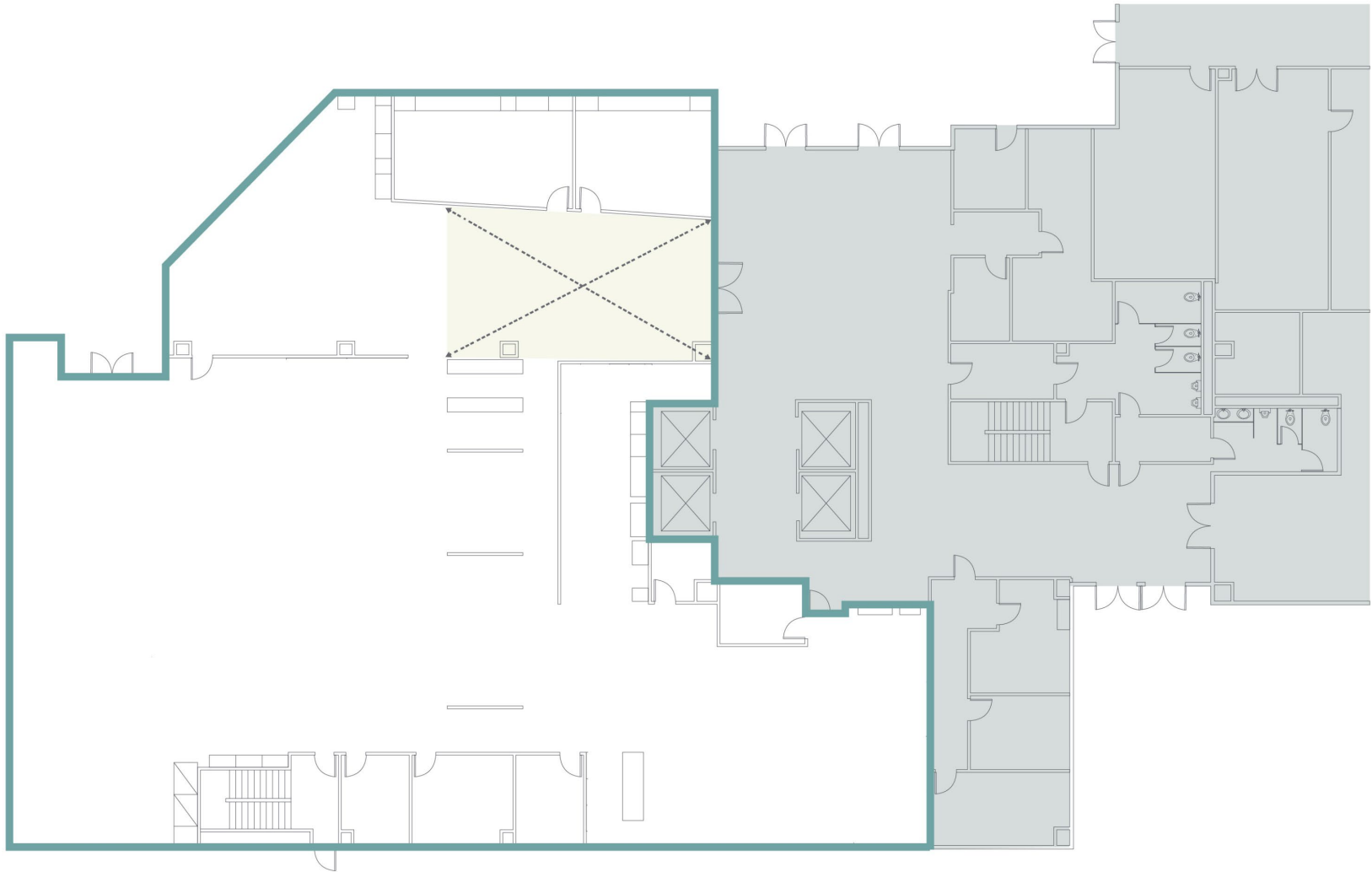
1st Floor (East tower)

Suite 101: ±10,663 RSF

Available Now



[Tour space](#)



- Polished concrete
- Exposed ceilings
- Glass
- LVT flooring

Hypothetical furniture plan

For more information, please contact:

JOE BEVAN
+1 714 675 3777
joe.bevan@jll.com
RE lic #01749828

WADE CLARK
+1 949 697 4583
wade.clark@jll.com
RE lic #01192143

BILLY SHAW
+1 949 545 4034
billy.shaw@jll.com
RE lic #02089829



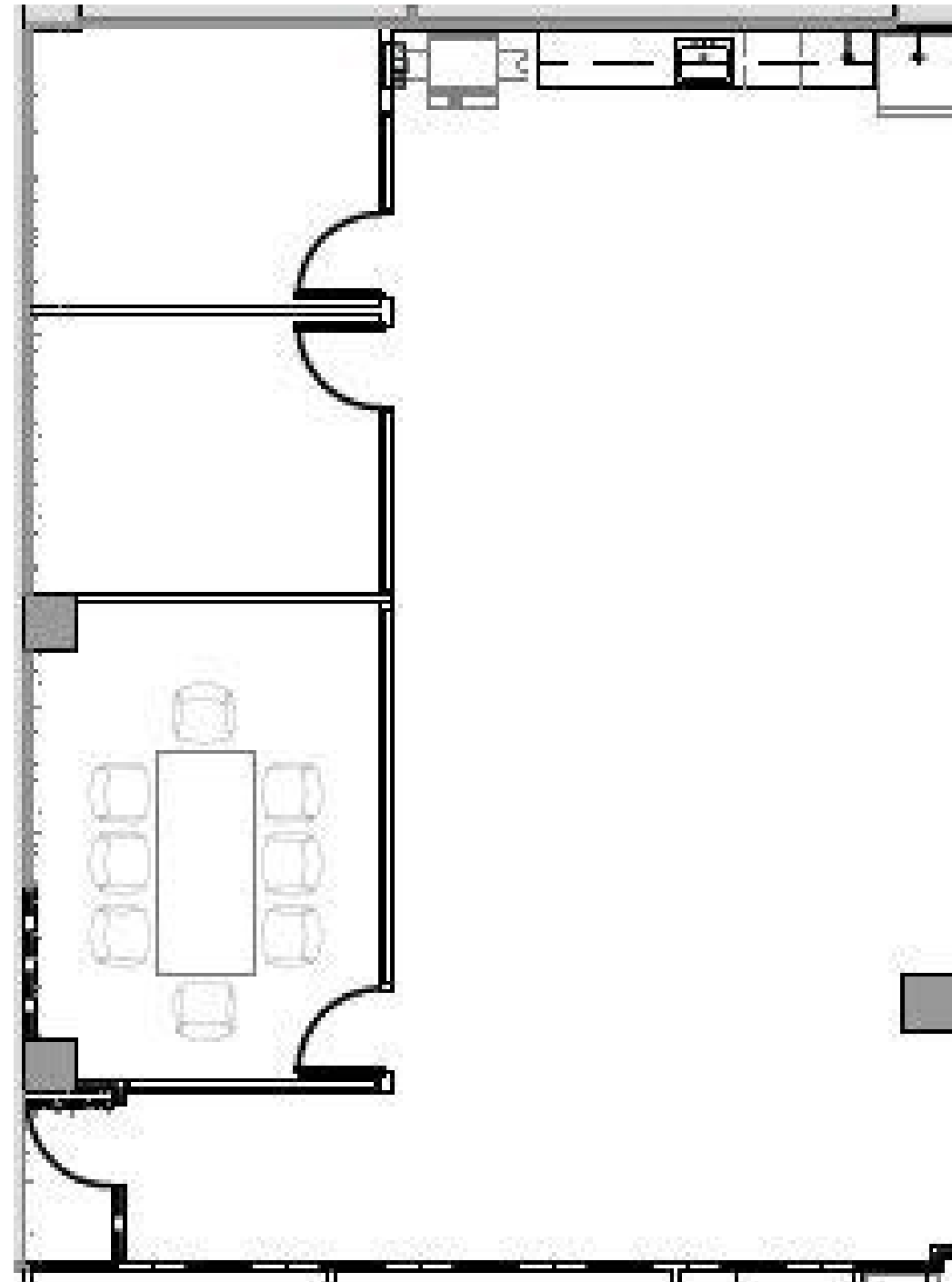
2nd Floor (East tower)

Suite 260: ±1,914 RSF

Available Now



[Tour space](#)



For more information, please contact:

JOE BEVAN
+1 714 675 3777
joe.bevan@jll.com
RE lic #01749828

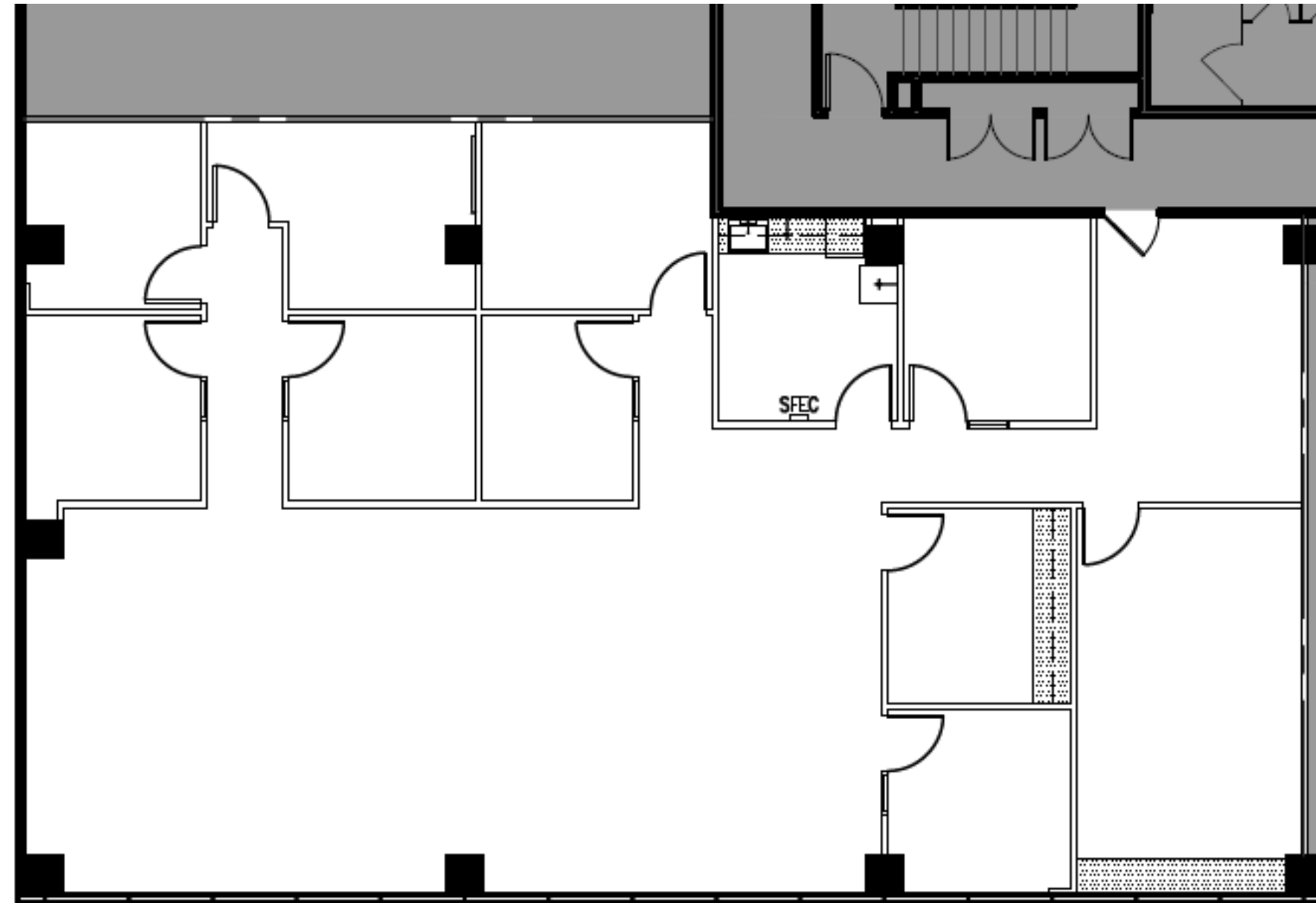
WADE CLARK
+1 949 697 4583
wade.clark@jll.com
RE lic #01192143

BILLY SHAW
+1 949 545 4034
billy.shaw@jll.com
RE lic #02089829

4th Floor (East tower)

Suite 420: ±3,193 RSF

Available November 2026



For more information, please contact:

JOE BEVAN
+1 714 675 3777
joe.bevan@jll.com
RE lic #01749828

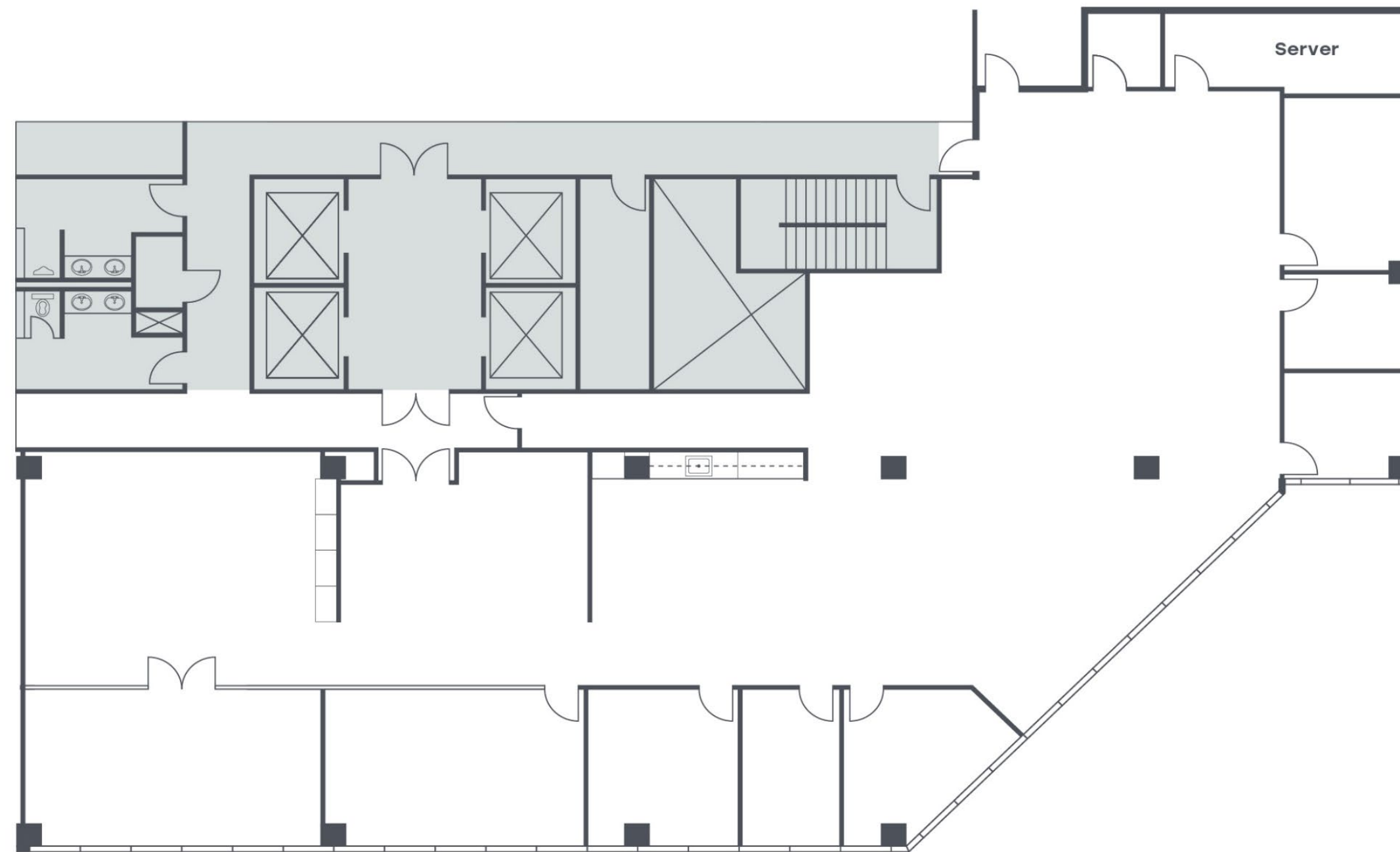
WADE CLARK
+1 949 697 4583
wade.clark@jll.com
RE lic #01192143

BILLY SHAW
+1 949 545 4034
billy.shaw@jll.com
RE lic #02089829

4th Floor (East tower)

Suite 450: ±6,191 RSF

Available Now



For more information, please contact:

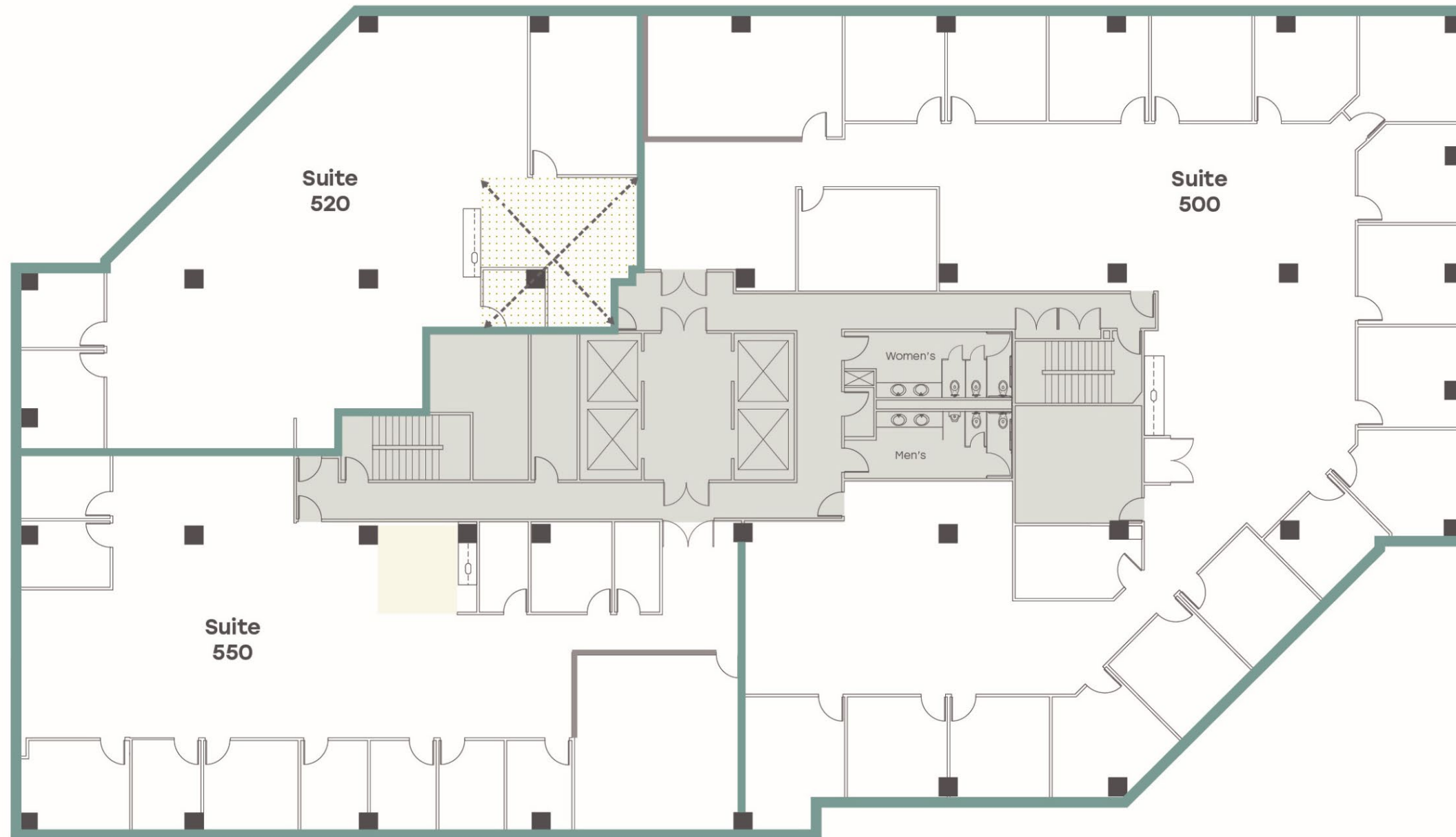
JOE BEVAN
+1 714 675 3777
joe.bevan@jll.com
RE lic #01749828

WADE CLARK
+1 949 697 4583
wade.clark@jll.com
RE lic #01192143





BILLY SHAW
+1 949 545 4034
billy.shaw@jll.com
RE lic #02089829

5th Floor (East tower)

Combined: ±18,878 RSF



| Suite | Size | Availability | Virtual Tour | Notes |
|-----------|------------|--------------|----------------------------|-----------------------|
| Suite 500 | ±9,861 RSF | Now | Click here | Former law firm space |
| Suite 520 | ±3,934 RSF | Now | Click here | Creative spec suite |
| Suite 550 | ±5,083 RSF | Now | Click here | Spec suite |

-  Polished concrete
-  Exposed ceilings
-  Glass
-  LVT flooring

For more information, please contact:

JOE BEVAN
+1 714 675 3777
joe.bevan@jll.com
RE lic #01749828

WADE CLARK
+1 949 697 4583
wade.clark@jll.com
RE lic #01192143

BILLY SHAW
+1 949 545 4034
billy.shaw@jll.com
RE lic #02089829



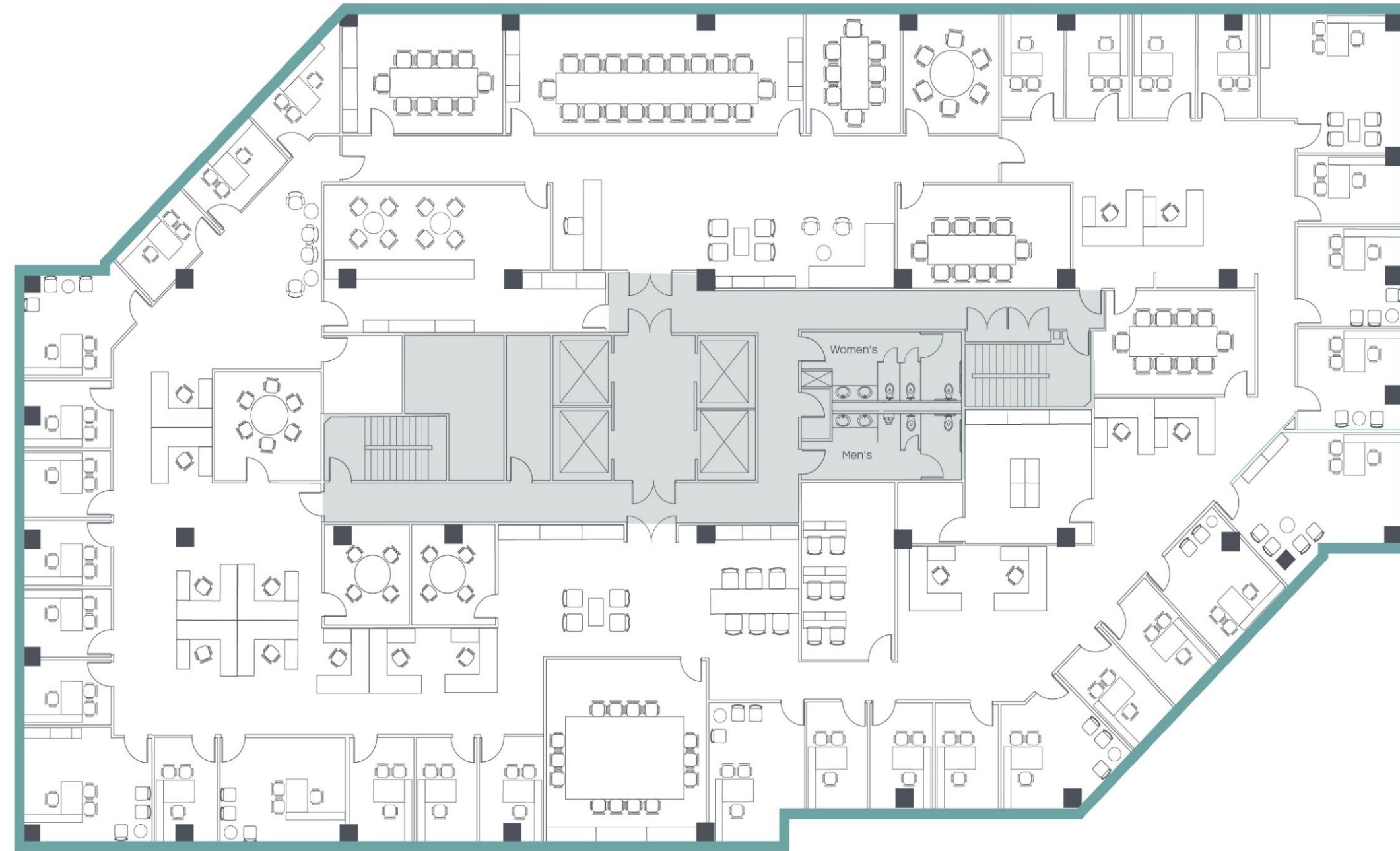
5th Floor (East tower)

Hypothetical: ±18,878 RSF



[Tour space](#)

High end law firm space can be delivered 6 months from lease execution



For more information, please contact:

JOE BEVAN
+1 714 675 3777
joe.bevan@jll.com
RE lic #01749828

WADE CLARK
+1 949 697 4583
wade.clark@jll.com
RE lic #01192143

BILLY SHAW
+1 949 545 4034
billy.shaw@jll.com
RE lic #02089829

2nd Floor (East tower)

SUITE 250: ±2,482 RSF

Available Now

Leased & archived plans

For more information, please contact:

JOE BEVAN
+1 714 675 3777
joe.bevan@jll.com
RE lic #01749828

WADE CLARK
+1 949 697 4583
wade.clark@jll.com
RE lic #01192143

BILLY SHAW
+1 949 545 4034
billy.shaw@jll.com
RE lic #02089829

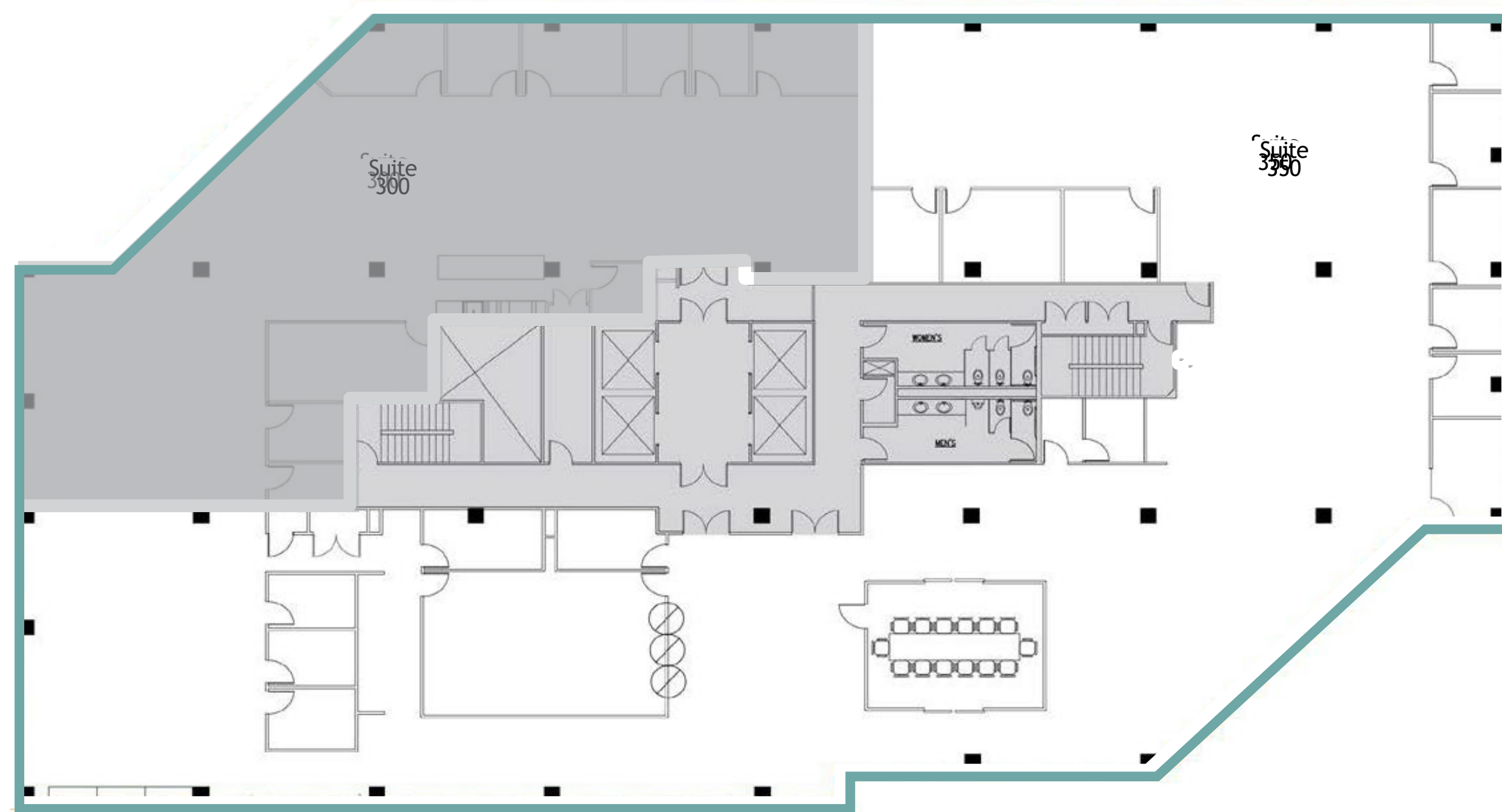


3rd Floor (East tower)

Suite 350: ±13,165 RSF

Available Now

Leased: Nexus Petroleum



For more information, please contact:

JOE BEVAN
+1 714 675 3777
joe.bevan@jll.com
RE lic #01749828

WADE CLARK
+1 949 697 4583
wade.clark@jll.com
RE lic #01192143

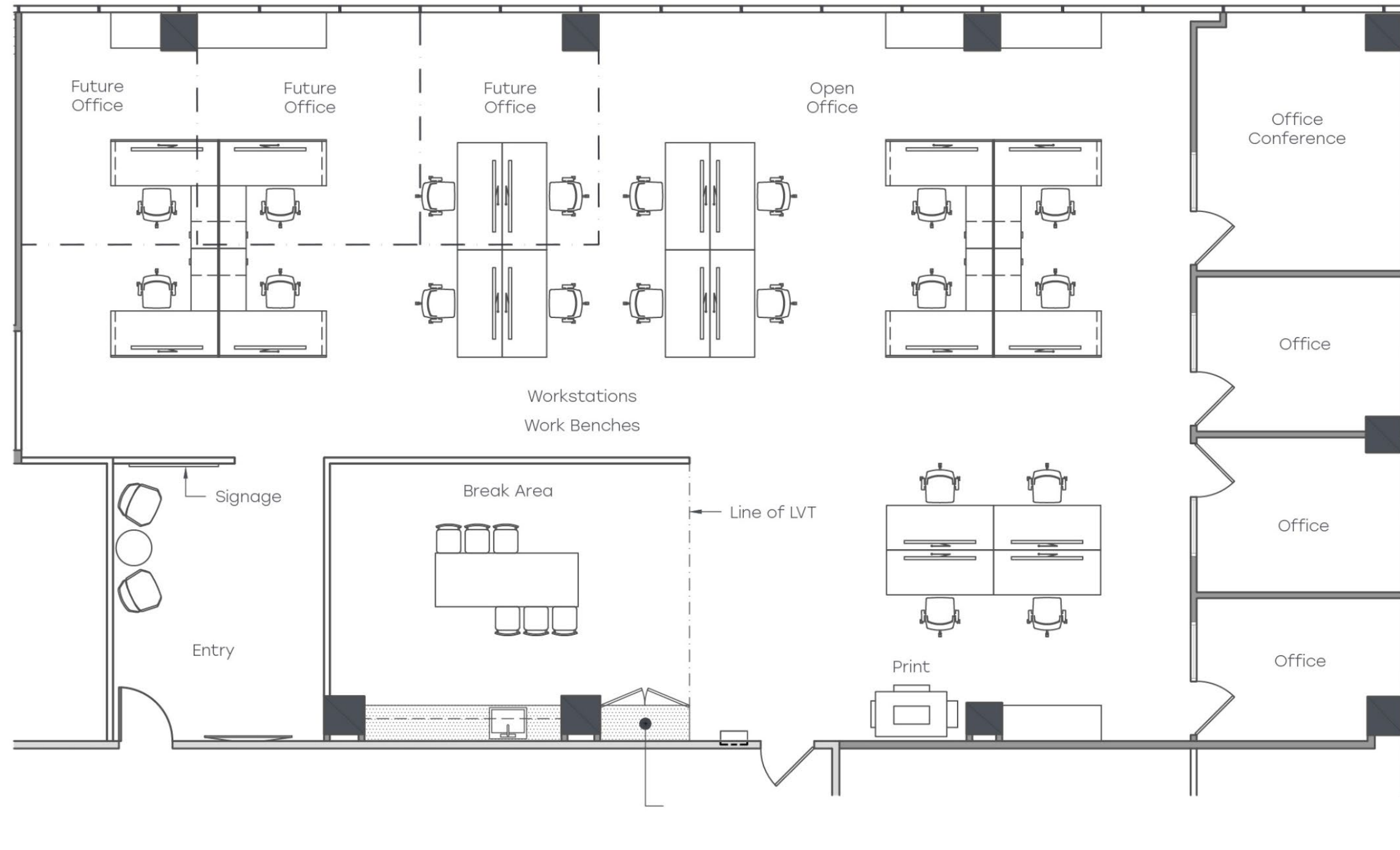
BILLY SHAW
+1 949 545 4034
billy.shaw@jll.com
RE lic #02089829

4th Floor (East tower)

Suite 475: ±4,001 RSF

Available Now

Leased: Accudata



For more information, please contact:

JOE BEVAN
+1 714 675 3777
joe.bevan@jll.com
RE lic #01749828

WADE CLARK
+1 949 697 4583
wade.clark@jll.com
RE lic #01192143

BILLY SHAW
+1 949 545 4034
billy.shaw@jll.com
RE lic #02089829